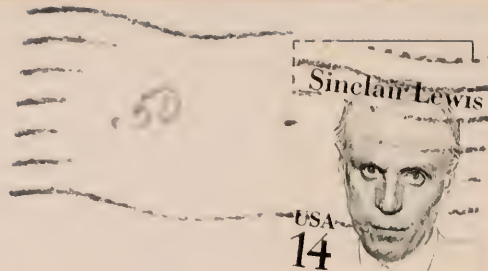
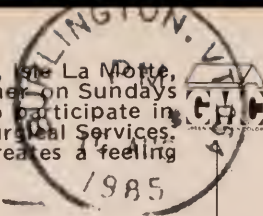




The Pavilion at St. Anne's Shrine, Isle La Motte, Vermont. Here huge crowds gather on Sundays and especially on Feast Days to participate in these celebrations and other Liturgical Services. The simple open-air structure creates a feeling of closeness to nature.



Dear Pally:

I am up here at the shrine for five days. The Bouring is so nice. We are near the Canadian Border on Lake Champlain look for it on maps.
Love Kay & Vanessa

Published by: Green Mountain Color, Ltd.
P.O. Box 275, Barre, Vermont 05641

Polly Plouffe
84 N Glenbrook
Waterbury
Conn

06705

